

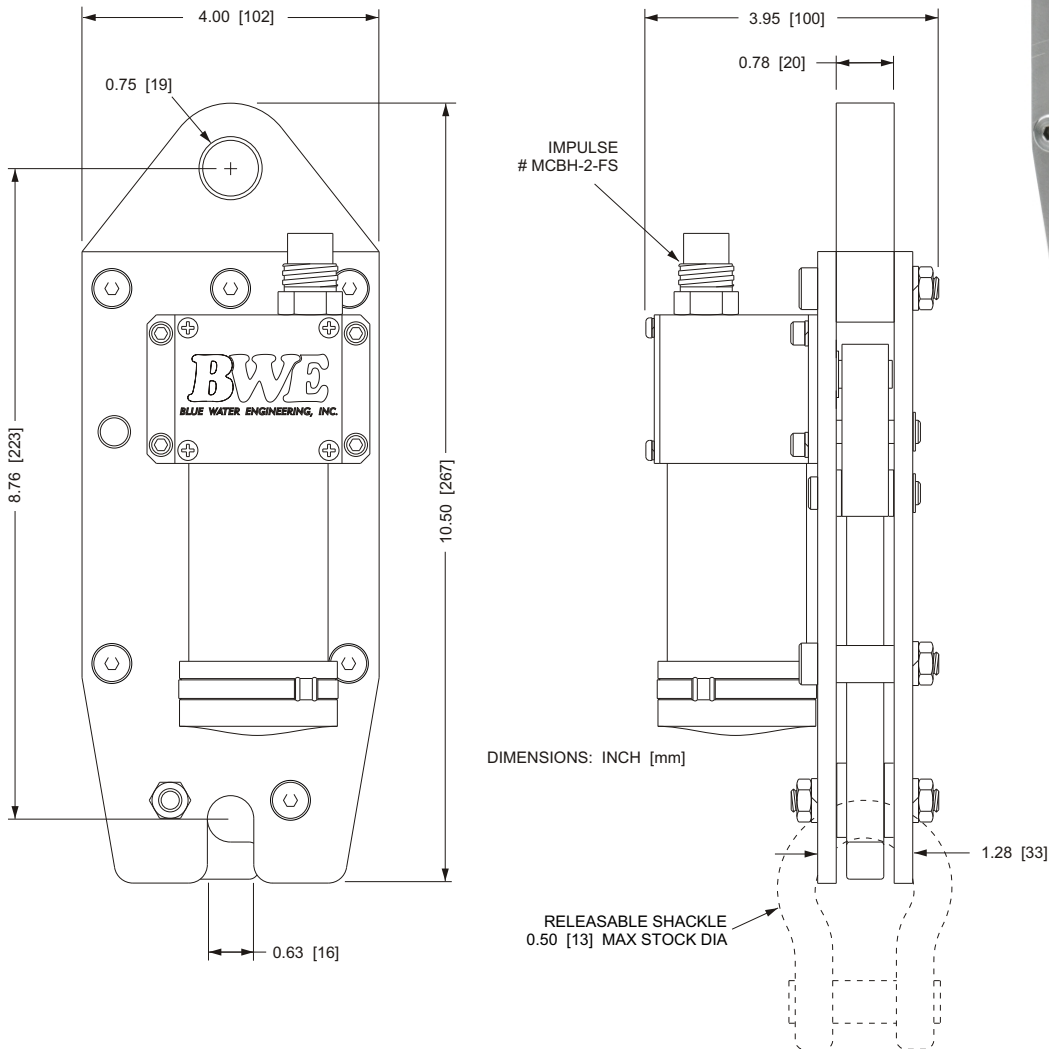
Motor Driven Release

Model MR2500B

The Model MR2500B is an electro-mechanical release device with a working and release capability of 2,500 lb, and a break strength in excess of 10,000 lb. The release permits the recovery of underwater hardware or packages in applications where the use of acoustics is either not needed or desired. The mechanism also provides a safe and secure method to release objects into the water when lifted over the side of the ship or when lowered to the seafloor. Other customers have incorporated the MR2500B into their ROV's or tow sleds in order to remotely release packages when underwater.

FEATURES

- 2,500 lb (1,135 kg) max working and release load
- 10,000 ft (3,050 m) depth capability
- 18 to 30 vDC, approximately 8 watts
- Stainless steel construction
- Oil filled, pressure compensated motor enclosure
- Wet-mate electrical connector with 6 ft cable
- Locking mechanism may be manually released at anytime without requiring electrical power



271-A North Otto St. Port Townsend, WA 98368
Tel: (360) 379-0754 Fax: (360) 379-4703
Email: sales@bluewaterengineering.com
Website: www.bluewaterengineering.com

Specifications subject to change without notice.
© 2006 Blue Water Engineering, Inc.